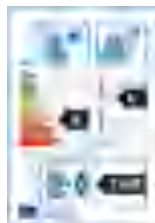


REGIONAL

Y203 (DT23)



Application



Trailer wheel position for regional.
Suitable for multiple-purpose transport
on good road surface.

Long Mileage Solution

- Outstanding belt durability to sharply increase mileage.
- High abrasion tread compound combined with widened tread width to enhance expected mileage markedly.

Low Failure Solution

- Special base rubber formula to reduce internal heat and avoid early damage of tread and shoulder.
- Specially designed pattern grooves can effectively protect against stone embed and avoid early damage.
- Excellent footprint distributing weight-bearing forces evenly over a large area to ensure uniform wear.

Transport Efficiency Solution

- Four zigzag main pattern grooves to provide excellent handling and high-speed performance.

All-weather Grip Solution

- Multiple tiny sipes to provide excellent heat dissipation and wet grip.



M+S

NO.	Size	Type	PR	Standard Rim	Permitted Rim	LI/SS	Second LI/SS	Tread Depth (mm)	Tread Width (mm)	Section Width (mm)	Overall Diameter (mm)	Static Loaded Radius(mm)	Min.distance between rim centers(mm)
1	10R17.5	TL	16	7.5	6.75	143/141J	-	13.0	190	254	858	290	412
2	215/75R17.5	TL	16	6.00	6.75	135/133L	-	13.0	168	212	767	237	359
3	215/75R17.5	TL	18	6.00	6.75	135/133J	-	13.0	168	212	767	237	359
4	235/75R17.5	TL	16	6.75	7.50	132/130L	-	13.0	187	233	797	262	372
5	235/75R17.5	TL	16	6.75	7.5	143/141L	-	13.0	187	233	797	262	372
6	235/75R17.5	TL	18	6.75	7.5	143/141J	-	13.0	187	233	797	262	372
7	255/70R22.5	TL	16	7.50	8.25	140/137N	-	10.5	200	255	930	287	435
8	275/70R22.5	TL	16	8.25	9.00	148/145M	-	13.0	213	276	958	311	446
9	275/70R22.5	TL	18	8.25	9.00	146/143L	-	13.0	213	276	958	311	446
10	6.50R16LT	TT/TL	12	5.50F	5.00E,5.00F	110/105M	-	10.0	151	185	750	220	350
11	7.00R16LT	TT/TL	14	5.50F	6.00G	118/114M	-	12.0	160	200	775	236	362
12	7.50R16LT	TT/TL	6	6.00G	5.50F,6.50H	105/101M	-	13.0	170	215	805	255	375
13	7.50R16LT	TT/TL	14	6.00G	5.50F,6.50H	122/118M	-	13.0	170	215	805	255	375
14	8R17.5	TL	12	6.00	-	122/120J	-	13.0	160	208	784	231	378
15	ST235/85R16	TT	14	6.50	6.00J,7.00J	129/125L	-	9.5	190	235	806	273	373