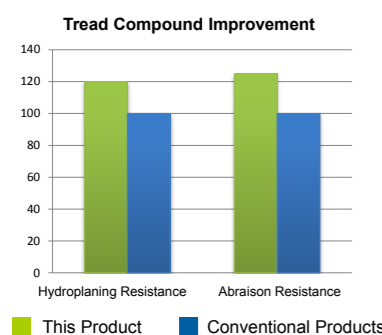


# SUV-HT H/T01



Optimized High Performance urban on and off-road pattern suitable for Light Trucks and SUVs with excellent endurance and low noise generation.



■ **Handling**

A ladder-like structure at the bottom of the grooves connects the blocks on both sides. This design increases tread strength, improves handling, and efficiently reduces stone retention.

■ **Wet Performance**

Wide grooves provide excellent water drainage, grip, and driving performance on wet pavement.



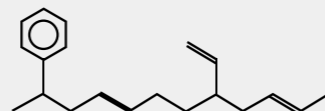
■ **Quiet**

The precision spacing of tread blocks, angles, and dense small grooves efficiently reduce noise.

■ **Off-Road**

The optimal combination of wide grooves and specially designed tread blocks greatly improves sport properties and driving comfort off-road.

Employs a specialised rubber compound solution to improve hydroplaning resistance and improve heat dissipation.



RIM	SIZE	LI/SS		T.D.	STANDARD RIM	S.W.	O.D.	MAX.LOAD	MAX.PRESSURE	UTQG	SIDEWALL
				mm	inch	mm	mm	KG	kPa		
14	205/75R14	95S	--	9.5	5 1/2J	203	664	690	300	480/A/B	WR
14	215/75R14	100S	--	9.5	6J	216	678	800	300	480/A/B	WR
15	205/70R15	96T	--	9	6J	209	669	710	300	480/A/B	WR
15	205/75R15	97T	--	9.5	5 1/2J	203	689	730	300	480/A/B	WR
15	215/70R15	98T	--	9	6 1/2J	221	683	750	300	480/A/B	WR
15	215/75R15	100S	--	9.2	6J	216	703	800	300	480/A/B	BSW
15	215/75R15	100T	--	9.2	6J	216	703	800	300	480/A/B	WR
15	215/75R15	100T	--	9.2	6J	216	703	800	300	480/A/B	BSW
15	225/70R15	100T	--	9	6 1/2J	228	697	800	300	480/A/B	WR
15	225/70R15	100T	--	9	6 1/2J	228	697	800	300	480/A/B	BSW
15	225/75R15	102T	--	9.2	6J	223	719	850	300	480/A/B	WR
15	225/75R15	102T	--	9.2	6J	223	719	850	300	480/A/B	BSW
15	235/75R15	105S	--	9.5	6 1/2J	235	733	925	300	480/A/B	BSW
15	235/75R15	105T	--	9.5	6 1/2J	235	733	925	300	480/A/B	WR
15	235/75R15	105T	--	9.5	6 1/2J	235	733	925	300	480/A/B	BSW
16	215/65R16	98T	--	9	6 1/2J	221	686	750	300	480/A/B	BSW
16	215/70R16	100T	--	9	6 1/2J	221	708	800	300	480/A/B	BSW
16	225/70R16	103T	--	9	6 1/2J	228	722	875	300	480/A/B	BSW
16	235/70R16	106T	--	9	7J	240	736	950	300	480/A/B	BSW
16	245/70R16	111T	XL	9	7J	248	750	1090	340	480/A/B	BSW
16	255/70R16	111T	--	9	7 1/2J	260	764	1090	300	480/A/B	BSW
16	265/70R16	112S	--	9	8J	272	778	1120	300	480/A/B	BSW
17	215/60R17	96H	--	9	6 1/2J	221	690	710	300	480/A/A	BSW
17	225/65R17	102S	--	9.2	6 1/2J	228	724	850	300	480/A/B	BSW
17	235/65R17	104S	--	9	7J	240	738	900	300	480/A/B	BSW
17	245/65R17	107S	--	9	7J	248	750	975	300	480/A/B	BSW
17	265/65R17	112S	--	9	8J	272	776	1120	300	480/A/B	BSW
17	265/70R17	115T	--	9	8J	272	804	1215	300	480/A/B	BSW
18	235/60R18	107H	XL	9	7J	240	739	975	340	480/A/A	BSW
18	265/65R18	114H	--	9	8J	272	801	1180	300	480/A/B	BSW

1inch=25.4mm | 1kPa=0.142psi | 1KG=2.2 lbs | XL Extra Load | LI Load Index | SS Speed Symbol